

Defect Classification Strategies

Markus Lankers, PhD
November 2022





Definition of defects

- Critical
- Major
- Minor

Defect Zones

Tools



CRITICAL: Product is not usable. The defect might have an impact on the patient health.
E.g. Sterility/ impact on patient health.

MAJOR: Performance of the product might be lowered due to an impact on handling or package functionality

MINOR: Product quality is affected but functionality of the product is not limited



Patient safety

Vial integrity might be injured (sterility)

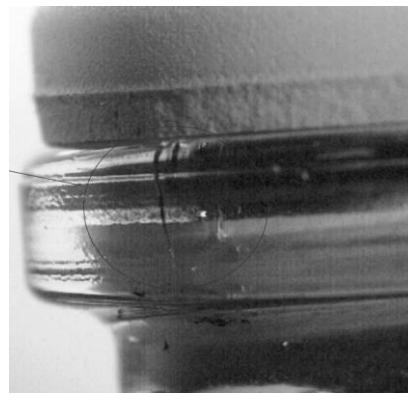
Regulatory

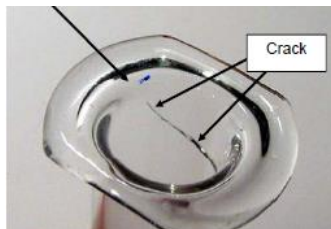
Does not comply with specification

Customer perception

Bad reputation due to recall

Potential loss of market share





Cracks going through the glass wall





- Liquid between ribs



- Dirt or liquid between ribs

- Precipitation in solution
- Shrunken collapsed cake
- Leaking container
- Incorrect color point or band at ampoules

Patient safety

Patient safety is not compromised

Regulatory

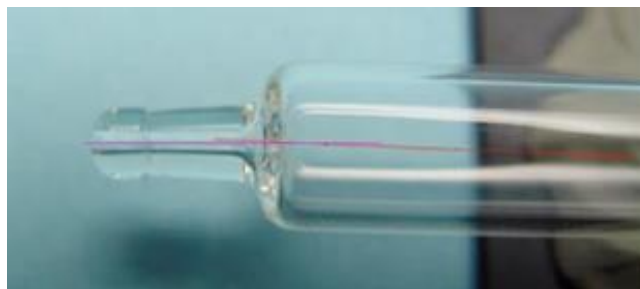
Conform with (drug) specifications

Customer Perception

Defect might be observed by the customer.
Consider regional differences in acceptance
(Japan)
Potential loss of customers



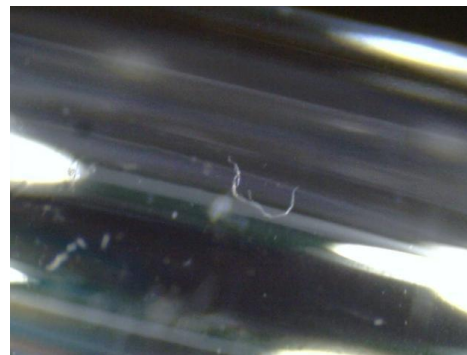
Stone



Bent tip

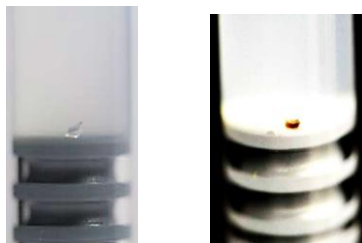


Fingertip not properly tooled



Fibre in syringe

Major Defects ?



particles



Crack not touching the drug

Patient safety

Patient safety is not compromised

Regulatory

Conform with specifications

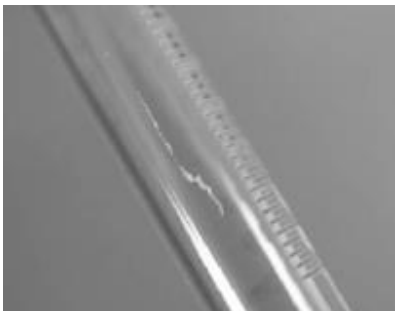
Customer perception

Defect might be observed by the customer.

Consider regional differences in acceptance

(Japan)

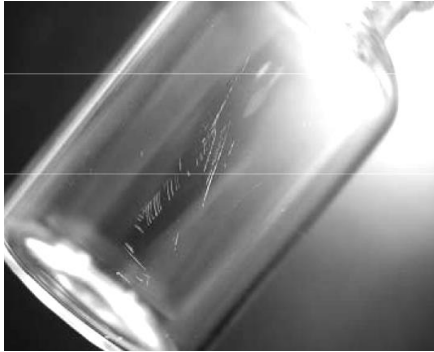
Potential loss of customers



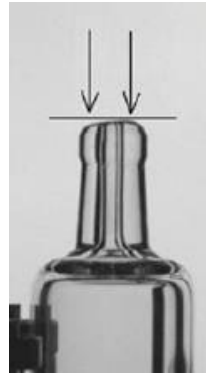
Scratch outside



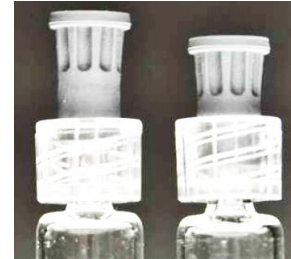
Dirt outside

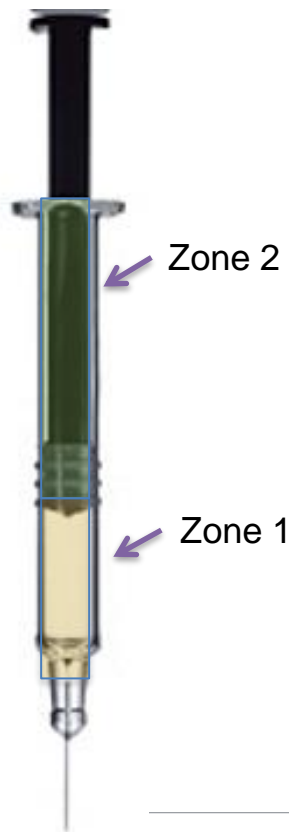


Surface scratches



Cone not properly
tooled





Zone concept:

- Zone 1: part or surface has contact to drug
- Zone 2: no contact to product

Defect classification:

Zone + Defect

- Critical: Sterility/ impact on patient health
- Major: impact on functionality
- Minor: cosmetic defect



Specific Defect Evaluationsheet						
m= minor M = Major C=Critical						
Position	No	Defect description	Requirement	Zone1	Zone 2	Remark
Plunger	P1	spots on plunger		M		
	P2	damaged plunger	intact plunger	C	M	
	P3	wrong orientation of plunger	correct orientation	C	C	
	P4	water in-between lips of plunger			C	
Container	G1	scratches	no scratches	M	m	
	G2	overfilled		M		
	G3	underfilling		M		
	G4	particles	essentially free	M	M	
	G5	Broken	container intact	C	M	
	G6	Cracked	glass barrel intact	C	M	
	G7	Scratches	no scratches	M	m	
	G8	damaged finger rest	intact finger rest		m	
Needle	N1	hook on canula			C	
	N2	needle sticking through needle shield	needle inside needle sheet		C	

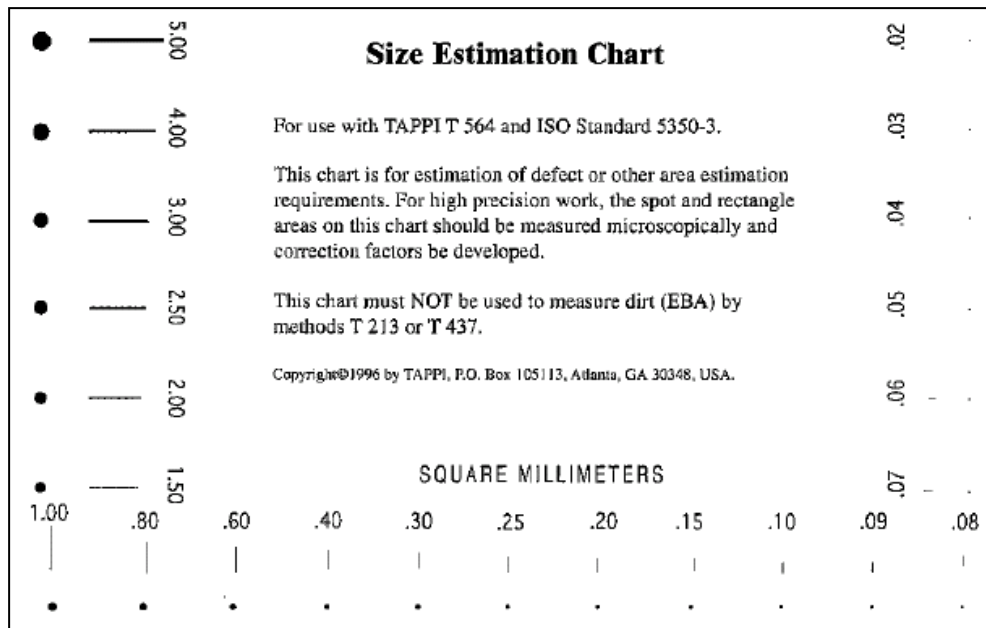


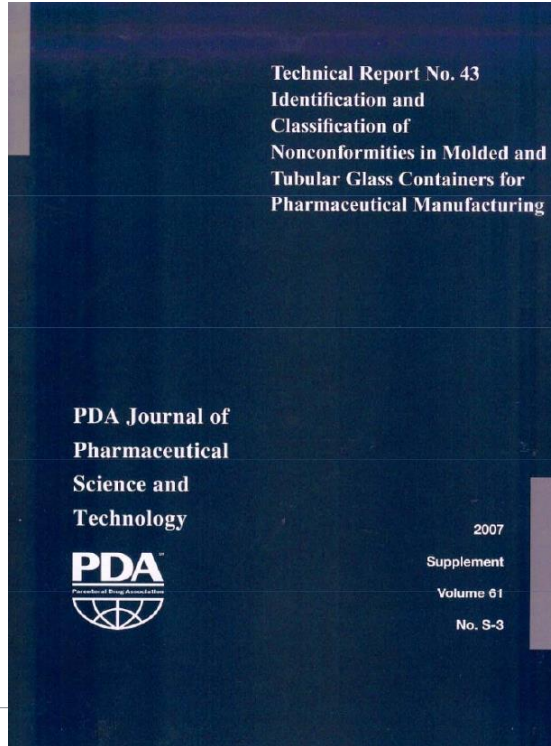
Zone 2

Zone 1

Zone 1 inside of the barrel
Zone 2 outside

Technical
association of
the Pulp and
Paper
Industry
(TAPPI)





Identification and
Classification of
Nonconformities in Molded
and Tubular Glass Containers
for Pharmaceutical
Manufacturing:
Covering Ampoules, Bottles,
Cartridges, Syringes and Vials
Technical Report No. 43 (Revised
2013)

Table 4.2.3-1 Tubular Glass Container Lexicon: Cartridges

NONCONFORMANCE	DESCRIPTION	LOCATION	CLASSIFICATION
Adhered Glass Particles (a.k.a. Sintered or Fused), Internal or External	Small particles or fragments of glass adhered to the interior or exterior surface of the cartridge	General	Critical if internal or if seal integrity is compromised; Major B if external
Airline, Closed	Elongated gaseous inclusion, parallel to the axis of the body, completely encapsulated	Body	Minor if in the body > 0.25 mm wide and full length
Airline, Open	Elongated gaseous inclusion that is not encapsulated and appears as a line parallel to the axis of the body. If open on the interior surface may by-pass the plunger and possibly create a leak path	Body	Critical if on interior surface; Minor if on exterior surface and > 0.25mm wide and full length
Bad Cut	Poor cut resulting in an irregular glazed end	Cut End	Major B if it causes processing problems, (Limit Sample); Minor otherwise
Bent	The finish and plane of the seal surface is not perpendicular to the axis of the body	Finish/ Neck	Major B (Limit Sample)

Adhered Glass Particles – (a.k.a. Sintered or Fused), Internal or External

Location: General

Class: Critical if sharp or seal integrity is compromised; Major B if otherwise

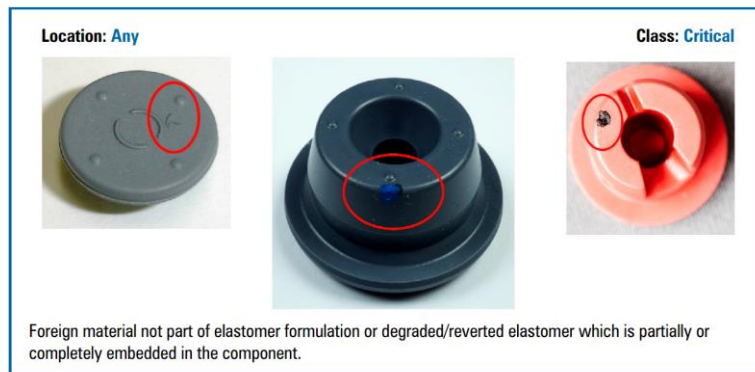


Small particles or fragments of glass adhered to the interior or exterior surface of the vial.

PDA Technical Report No. 76 (TR 76) Identification and Classification of Visible Nonconformities in Elastomeric Components and Aluminum Seals for Parenteral Packaging

Figure 8-11

Embedded Material (Extrinsic)



PDA Journal of Pharmaceutical Science and Technology

PDA Technical Report No. 43 (Revised 2013) Identification and Classification of Nonconformities in Molded and Tubular Glass Containers for Pharmaceutical Manufacturing: Covering Ampoules, Bottles, Cartridges, Syringes and Vials

PDA Technical Report No. 76 (TR 76) Identification and Classification of Visible Nonconformities in Elastomeric Components and Aluminum Seals for Parenteral Packaging

Acknowledgments

- Georg Roessling
- John Shabushnig