

CSL: our history

100 years old and just getting started



CELEBRATING

100

CSL

CSL at a glance

The Commonwealth Serum Laboratories was established in Australia in 1916 to service the health needs of a nation isolated by war.



CSL at a glance

CSL is a global specialty biotherapeutics company that develops and delivers innovative biotherapies that save lives, and help people with life-threatening medical conditions live full lives.

30+ 
Countries
Of operations around the world

6.0+ 
US\$ Billion
In annual revenue

16,000+ 
Employees around the world



Australia



Germany




Switzerland



United Kingdom



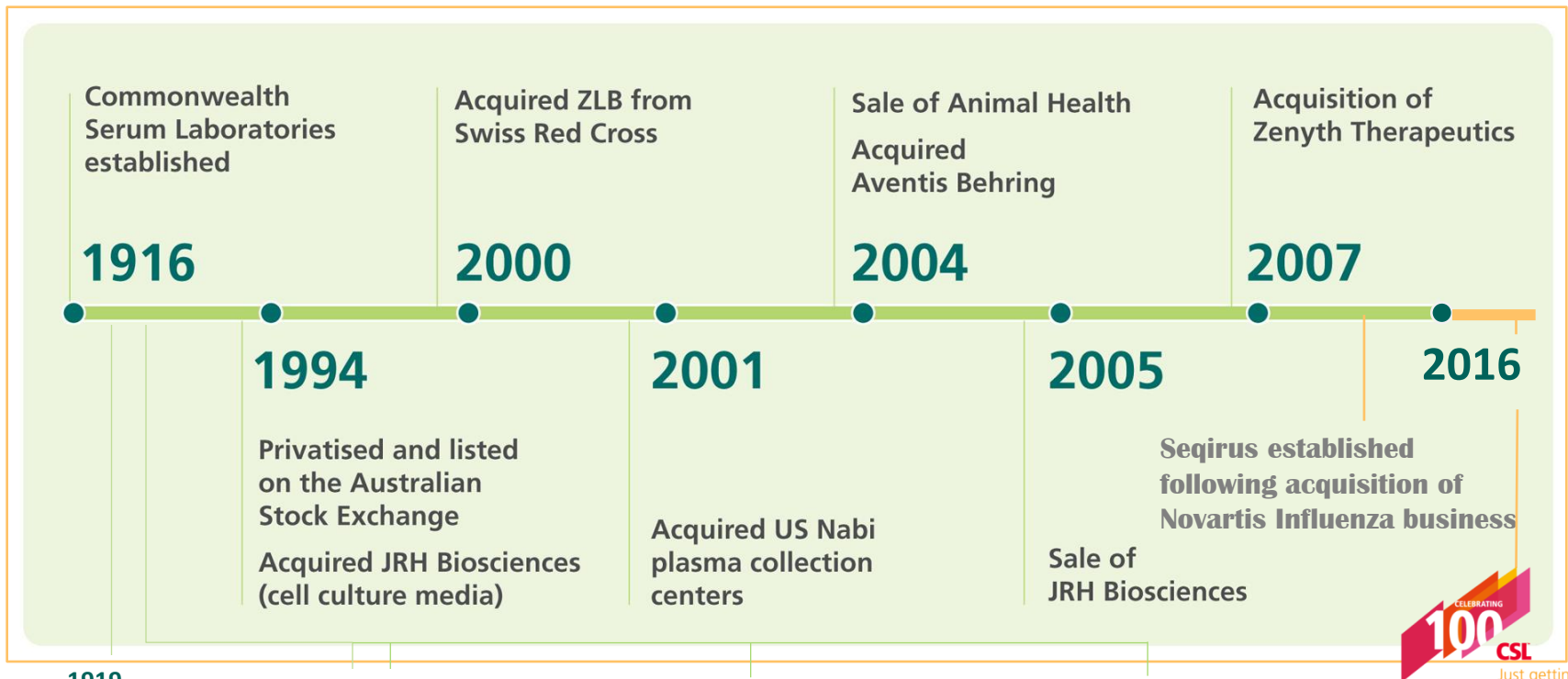
United States

2.3 
Billion
In R&D investments in last 5 years
advances exciting pipeline

1,100+ 
R&D employees

140+ 
Plasma collection centres across
Europe and North America

100 Years: Providing Essential Medicines



1919
Influenza vaccine



1930
Labs at Parkville



1952
Plasma fractionation commenced



1953
Ad for triple antigen vaccine



CSL's Centenary Year and just getting started



R&D Strategic Approach

Immunoglobulins

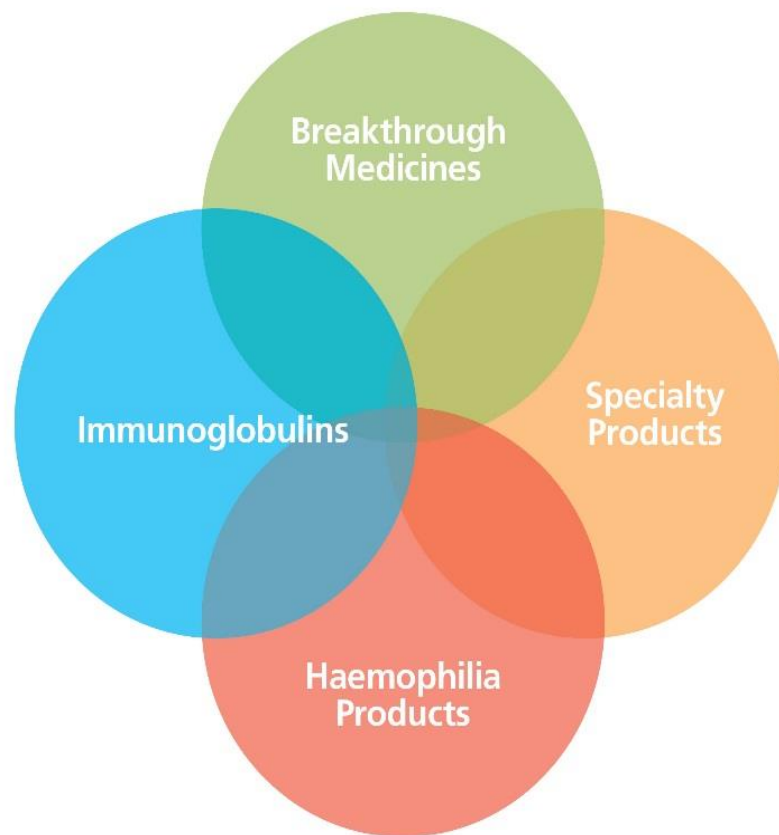
Products such as Hizentra® and Privigen®.

Direction: Maintain leadership position through focus on improved patient convenience, yield improvements, expanded labels, new formulation science and specialty Igs.

Breakthrough Medicines

Protein-based therapies such as anti IL-3R antibody (CSL362) and reconstituted High Density Lipoprotein (CSL112).

Direction: Develop new protein-based therapies for significant unmet medical needs and multiple indications.



Specialty Products

For acquired and perioperative bleeding such as Beriplex® and RiaSTAP®, and Berinert®, Corifact® and Zemaira®, for certain types of deficiencies.

Direction: Leverage our high quality, broad specialty plasma products portfolio through new markets, novel indications and new modes of administration.

Haemophilia Products

Plasma-derived products such as Haemate P® and recombinant coagulation factors.

Direction: Support and enhance plasma products and develop a novel recombinant portfolio with a focus on scientific and product innovation and patient benefit.

| | Research | Pre-clinical | Phase I | Phase II | Phase III | Registration | Commercial/ Phase IV |
|------------------------------------|---|---|---|---|--|----------------------------------|---|
| Life Cycle Management [#] | | | | | | | Immunoglobulins Haemophilia Specialty Products Influenza Vaccine |
| Market Development | | C1-inh New Indications Fibrinogen New Indications PCC New Indications | | | Hizentra® C1DP Privigen® Japan Beriplex® Japan CSL830 C1-INH subcut | | Kcentra™ US Bleeding /Surgery Respreza® EU |
| New Product Development | Ig Formulations Rec Coagulation Factors Partnered Vaccine Programs* P. gingivalis/POD OH-CRC Discovery Projects | CSL650 rVWF-FP Partnered Vaccine Programs* CSL334 IL-13R* ASLAN CSL312 Anti-FXIIa CSL324 G-CSFR CSL346 VEGFB | CSL689 rVlla-FP Congen Def Partnered Vaccine Programs* | CSL689 rVlla-FP Inhibitors CSL362 IL-3R* AML Janssen CSL112 reconstituted HDL CAM3001 GM-CSFR -AZ* | | CSL654 rIX-FP CSL627 rVIII-SC | |
| Core Capabilities: | Immunoglobulins | Haemophilia | Specialty Products | Breakthrough Medicines | Vaccines & IP | | |

*Partnered Projects

[#]LCM includes direct post marketing commitments as well as pathogen safety, capacity expansions, yield improvements, new packages and sizes for all registered products

2016 AND BEYOND INVESTING FOR THE FUTURE

CSL announces the establishment of a global hub for research and translational medicine at the Bio21 Institute, University of Melbourne.

The expansion will double CSL's Research presence and foster greater Collaborations with medical research institutes



CSL Centenary Fellowships

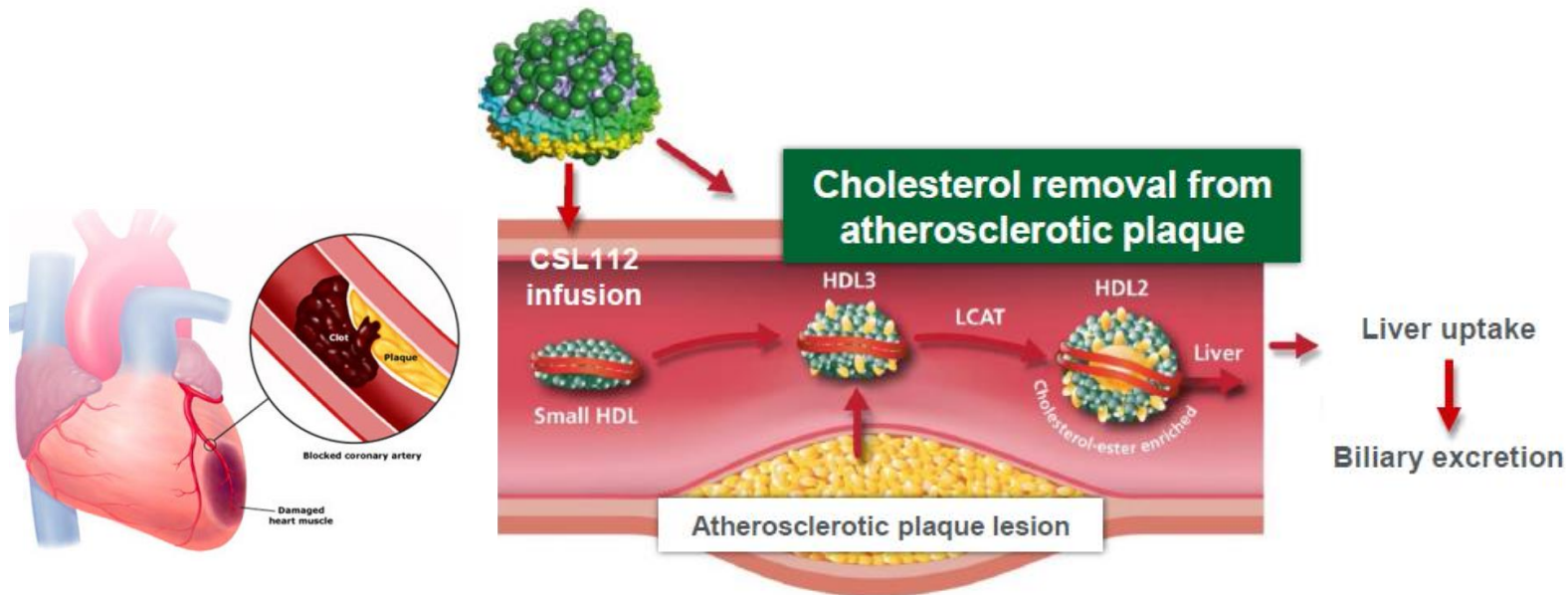
The \$25M CSL Centenary Fellowships were established in CSL's centenary year, 2016, to pay tribute to CSL's origins by supporting Australia's scientific community. Their intent is to foster excellence in Australian medical research by supporting mid-career Australian scientists to pursue world-class research.

CSL 2017 Fellow - Steven Lane - Improving survival for patients with acute leukaemia

**CSL 2017 Fellow - Geoff Faulkner –
Are memories stored in DNA?**



CSL112 – A Novel Therapy for Acute Coronary Syndrome



HEART ATTACK THERAPY SHOWS PROMISE

CSL commences planning for the late stage clinical development of CSL112, a novel plasma-derived compound for the prevention of early recurrent events following a heart attack. The therapy has the potential to address a significant unmet need for cardiac patients around the world.



- rIX-FP is
 - A recombinant protein purified from CHO cells
 - Generated by the genetic fusion of recombinant albumin to rFIX

COMMERCIALISATION SUCCESS

CSL Behring's decade-long program to develop novel recombinant clotting factors achieves major regulatory milestones, starting with the approval of IDELVION®, the first factor IX therapy approved in the US to deliver high-level protection with up to 14-day dosing for patients with haemophilia B

Seqirus FLUCELVAX QUADRIVALENT™

Seqirus' has developed and launched FLUCELVAX QUADRIVALENT™ (Influenza Vaccine), the first and only four-strain, cell culture-derived, inactivated seasonal influenza vaccine which helps protect against the two influenza A viruses and two B viruses recommended by the World Health Organization (WHO) and the FDA for the current influenza season.





CSL Behring Broadmeadows



CSL Behring Broadmeadows - History

The
Broadmeadows
Plant in
construction in
1991



Peter Turner accepts 'Plant of the Year' award in 1995 – one year after Plant opens

Inside CSL
A publication for the staff of CSL Limited

CSL Limited 45 Poplar Road Parkville Victoria 3052 Australia
Telephone: 389 1911 Editor: Laurie Byatt

March 1994

Broadmeadows plant opened

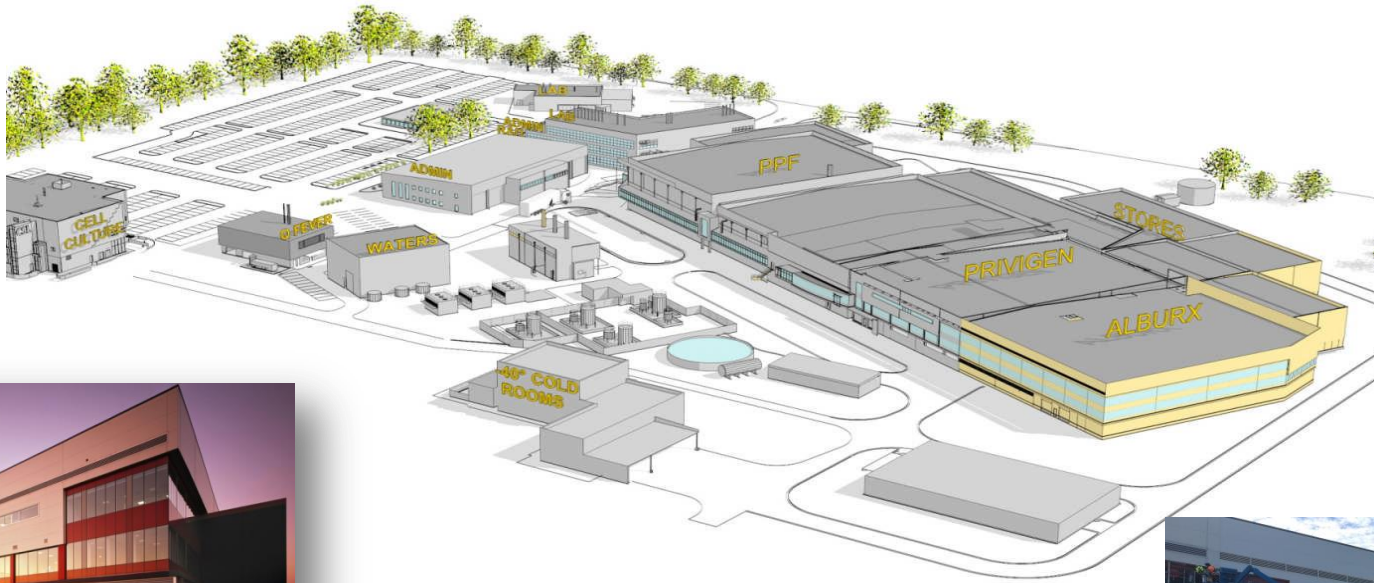
'This is the world's best,' said Senator the Hon. Graham Richardson, Federal Minister for Health, when he formally opened CSL's Broadmeadows plasma products facility on February 14, 1994. This is Australia at the forefront – at the cutting edge. This is us leading. And whatever opens in the rest of your life, you have to realise that you don't get to participate in that very often,' said the Minister.

Guests at the Opening included Dr Andrew theophanous – Local Federal Member and Parliamentary Secretary to the Minister for Health, Mrs Marie Tehan – State Minister for Health, Mr John Brumby – Leader of the Opposition and Member for Broadmeadows, and The Hon. Jim Carlton – Secretary General of the Australian Red Cross Society.



A brand new Broadmeadows site

CSL Behring Broadmeadows - Today



Turner PRIVIGEN Facility complete



Dedicated Recombinant protein facility



Martin Schaeren accept award for 2016 Victorian Manufacturer of the Year



AlbuRx Facility under construction

Biomedical Breakthroughs

Our Centenary year has provided us the opportunity to reflect on an abundance of stories from our past, and the astounding contribution CSL and Australia has made to science and medicine around the world. What better way to capture these amazing stories than through an **exhibition at Melbourne Museum**, in a long-term partner and fellow Melbourne icon, The Walter & Eliza Hall Institute.

The exhibit will run through to the end of January 2017 and if you miss this, there's the "movie"





As committed as ever, prepared like never before

With a proud Australian heritage, CSL Behring is a global leader in developing innovative plasma products. As Australia's national plasma fractionator, together with our extensive global supply chain and R&D network, CSL Behring is firmly committed and prepared like never before to serve Australia's growing needs for plasma products.